

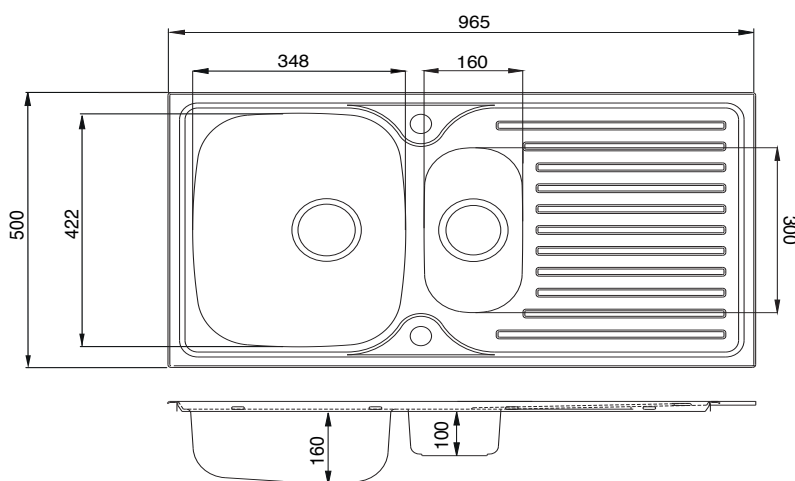
## EA07

### Easy 1.5 Bowl & Drainer Inset Steel Sink



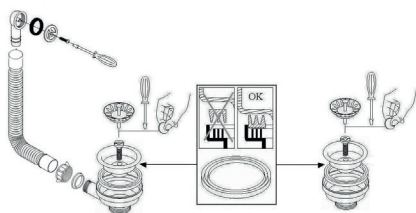
### Features

- Lifetime Warranty. T&C's Apply
- UKCA & CE Approved.
- 965mm x 500mm overall size, 160mm deep main bowl
- Reversible drainer design
- SS304 (0.5mm) steel
- Supplied complete with waste, hygienic overflow and fitting clips
- Minimum cabinet width required 600mm
- Waste disposal compatible
- Hot water tap compatible



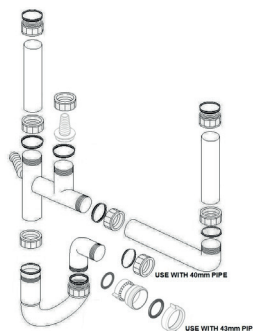
### Compatible Waste Kit

UKH052

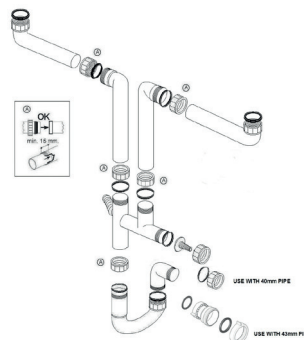


### Compatible Plumbing Kits

UKH040



UKH061



All dimensions are subject to change without notice. Please check the actual product for exact measurements. No liability will be accepted for incorrect or out of date measurements