

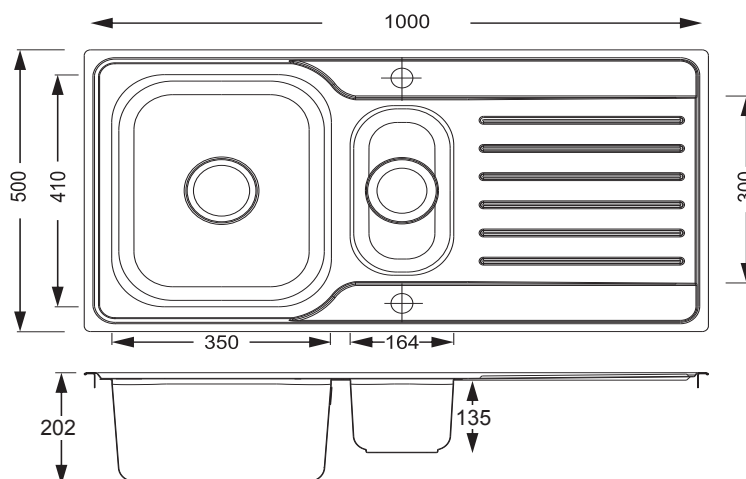
ET15

Echo Deep 1.5 Bowl
& Drainer Inset Steel Sink



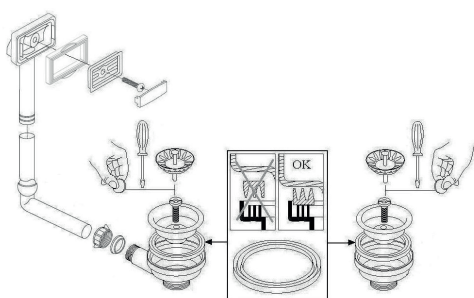
Features

- Lifetime Warranty. T&C's Apply
- UKCA & CE Approved.
- 1000mm x 500mm overall size, 202mm "Deep" main bowl
- Reversible drainer design
- SS304 (0.8mm) steel
- Supplied complete with round wastes, hygienic overflow and fitting clips
- Minimum cabinet width required 600mm
- Waste disposal compatible
- Hot water tap compatible



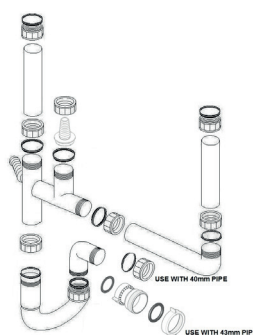
Compatible Waste Kit

UKH027



Compatible Plumbing Kits

UKH040



UKH061

