

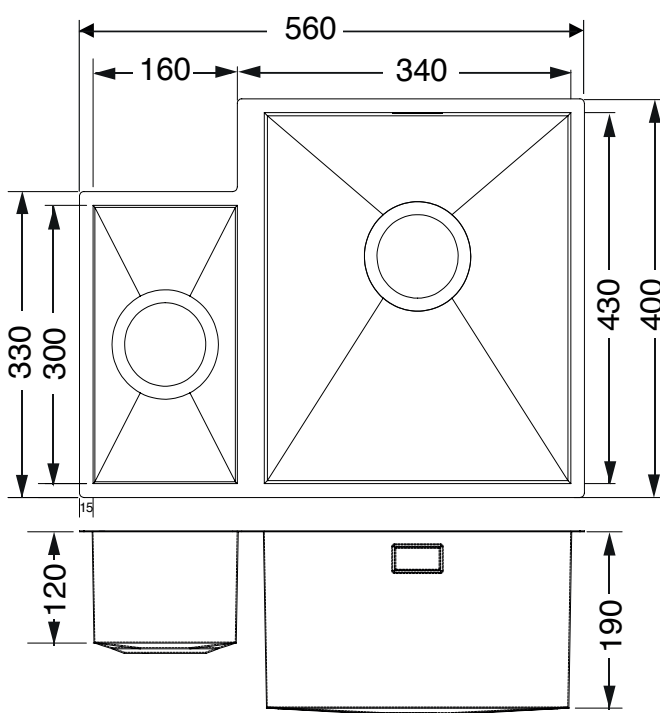
SQi06RH

Qube (RH Main Bowl)
1.5 Bowl Undermount or
Inset Steel Sink



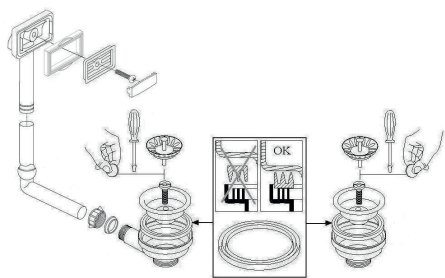
Features

- Lifetime Warranty. T&C's Apply
- UKCA & CE Approved.
- 560mm x 430mm overall size, 190mm deep main bowl
- Internal 340mm x 400mm (main bowl), 160mm x 300mm (small bowl)
- SS304 (1.0mm) steel, powder coated underside
- Hand fabricated
- Supplied complete with wastes & hygienic overflow
- Minimum cabinet width required 600mm
- Waste disposal compatible
- Hot water tap compatible



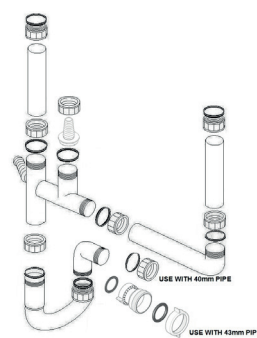
Compatible Waste Kit

UKH008



Compatible Plumbing Kits

UKH040



UKH061

