

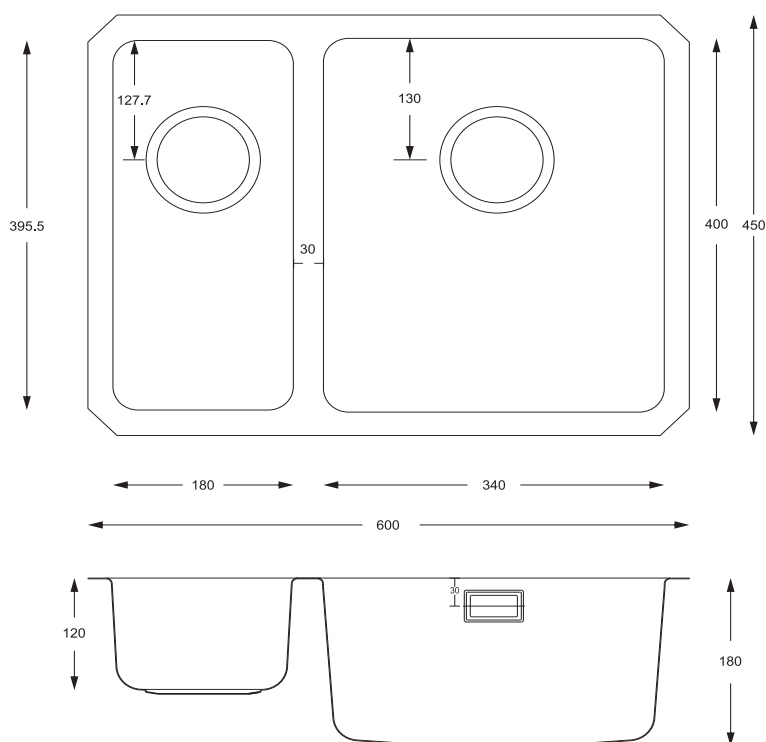
UM2506RH

Rhombus 1.5 Bowl
Undermount Steel Sink



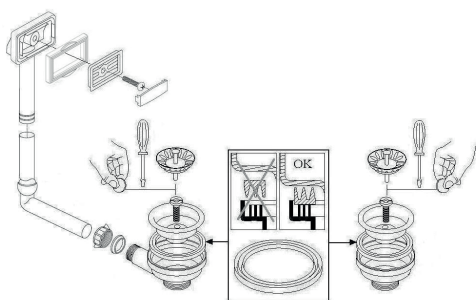
Features

- Lifetime Warranty. T&C's Apply
- UKCA & CE Approved.
- 600mm x 450mm overall size, 180mm deep main bowl
- Internal 340mm x 400mm (main bowl), 180mm x 400mm (half bowl)
- SS304 (0.8mm) steel, powder coated underside
- Supplied complete with wastes and hygienic overflow
- Minimum cabinet width required 600mm
- Waste disposal compatible
- Hot water tap compatible



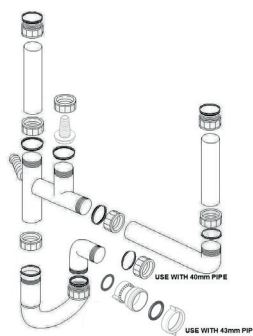
Compatible Waste Kit

UKH008



Compatible Plumbing Kits

UKH040



UKH061

